



Mitigation Plan for Four New Jersey Counties  
**Gloucester County Municipal Appendices**

**Appendix GC.14**  
**Newfield Borough, New Jersey**

Draft

January 5, 2015

## Notes to NJOEM / FEMA Reviewers:

The Draft Municipal Appendices for the Mitigation Plan for Four New Jersey Counties contain highlighted passages and entries per the following:

- **Yellow highlighted items** are incomplete pending response and input from the Municipal Working Group. Completion of these items may be necessary to meet plan review requirements.
- **Green highlighted items** are work-in-progress pending follow-up efforts by the Municipal Working Group and/or Stuart Wallace, LLC. Completion of these items may be accomplished after the formal plan review period as part of plan implementation efforts and are not necessary to meet plan review requirements.

---

## Table of Contents

---

<b>Table of Contents</b>	<b>GC.14-i</b>
<b>Part 1 Overview</b>	<b>GC.14-1</b>
1.1: Mitigation Plan for Four New Jersey Counties	GC.14-1
1.2: Newfield Borough (Gloucester County) Municipal Appendix	GC.14-1
<b>Part 2 Participation</b>	<b>GC.14-2</b>
2.1: Municipal Working Group Participation	GC.14-2
2.2: Public Participation	GC.14-4
<b>Part 3 Hazard Identification and Risk Assessment</b>	<b>GC.14-5</b>
3.1: Municipal Profile	GC.14-5
3.2: Hazard Priorities	GC.14-9
3.3: Hazard Mapping	GC.14-10
3.4: Critical Facilities Inventory and Hazard Exposure Assessment	GC.14-11
<b>Part 4 Mitigation Measures</b>	<b>GC.14-14</b>
4.1: Mitigation Goals and Strategy	GC.14-14
4.2: SDVR HMP Mitigation Measures	GC.14-15
4.3: Municipal Mitigation Measures – Identification	GC.14-16
4.4: Municipal Mitigation Measures – Implementation	GC.14-18
4.5: Multi-Jurisdictional Mitigation Measures	GC.14-20
4.6: Capabilities and Coordination	GC.14-22

---

## Table of Contents

---

### List of Figures

Figure GC.14-1: Newfield Borough (Gloucester County) Location Map	GC.14-5
Figure GC.14-2: Newfield Borough Base Map	GC.14-6
Figure GC.14-3: Newfield Borough Housing Units by Year Built	GC.14-8
Figure GC.14-4: Newfield Borough Mitigation Project Locations	GC.14-21

### List of Tables

Table GC.14-1: Newfield Borough (Gloucester County) Working Group	GC.14-2
Table GC.14-2: Public Participation	GC.14-4
Table GC.14-3: Newfield Borough Demographics	GC.14-7
Table GC.14-4: Newfield Borough Demographic Rankings	GC.14-7
Table GC.14-5: Newfield Borough Economics and Housing	GC.14-7
Table GC.14-6: Newfield Borough Ranking (Economics and Housing)	GC.14-8
Table GC.14-7: Supporting Mapping and Exhibits	GC.14-10
Table GC.14-8: Newfield Borough Critical Facilities Inventory	GC.14-12
Table GC.14-9: Newfield Borough Critical Facilities Hazard Exposure	GC.14-13
Table GC.14-10: Status of Newfield Borough SDVR HMP Mitigation Measures	GC.14-15
Table GC.14-11: Newfield Borough Municipal Mitigation Measures Identification	GC.14-16
Table GC.14-12: Newfield Borough Municipal Mitigation Measures Implementation	GC.14-18
Table GC.14-13: Newfield Borough Multi-Jurisdictional Mitigation Measures	GC.14-20

### Attachments

Attachment GC.14.A: Public Review Comments	GC.14.A-1
Attachment GC.14.B: Adoption Resolution	GC.14.B-1
Attachment GC.14.C: Approval Letter	GC.14.C-1

---

## Part 1: Overview

---

### Part 1.1: Mitigation Plan for Four New Jersey Counties

The Mitigation Plan for Four New Jersey Counties (NJ4 HMP) incorporates input from approximately ninety (90) participating municipalities in Camden, Cumberland, Gloucester, and Salem Counties. The NJ4 HMP is an update and expansion of the South Delaware Valley Region Multi-jurisdictional Hazard Mitigation Plans that were adopted by all four counties and approved by the Federal Emergency Management Agency in 2010 and 2011.

The NJ4 HMP has two main parts:

- Regional Hazard Mitigation Plan
- County and Municipal Appendices

The Regional Hazard Mitigation Plan includes descriptions and information that is common to all participating NJ4 HMP jurisdictions organized according to the following three main focus areas:

- Planning Process
- Hazard Identification and Risk Assessment
- Mitigation Measures

The Regional Hazard Mitigation Plan also includes Annexes that contain detailed background information for these three focus areas and additional reference materials for the implementation of the NJ4 HMP.

The County and Municipal Appendices include specific information for these same three main focus areas for each of the participating municipalities. Detailed tabulations are included in these Appendices for critical facilities, status of past mitigation activities, and proposed mitigation measures for each municipality.

### Part 1.2: Newfield Borough (Gloucester County) Municipal Appendix

This Municipal Appendix is focused on Newfield Borough in Gloucester County, New Jersey.

The Newfield Borough Municipal Working Group recommended the Newfield Borough (Gloucester County) Municipal Appendix for adoption on [date to be determined].

The Newfield Borough Committee adopted the Municipal Appendix by resolution on [date to be determined].

Region II of the Federal Emergency Management Agency subsequently approved the Municipal Appendix on [date to be determined].

## Part 2: Participation

### Part 2.1: Municipal Working Group Participation

Part 2.1 includes:

- *Municipal Working Group members including positions in the community, meetings and work sessions attended, and specific contributions to the Municipal Appendix*
- *Municipal positions and organizations that were invited but were not able to participate in the plan update process*
- *Municipal positions and organizations that have been recommended by the Federal Emergency Management Agency (FEMA) as candidates for participation on Municipal Working Groups but do not exist in the municipality*

Table GC.14-1 identifies the Municipal Working Group members. As explained in *Section 2: Planning Process* of the Mitigation Plan for Four New Jersey Counties (NJ4 HMP) Regional Hazard Mitigation Plan, the Municipal Working Groups are comprised of community representatives who worked to make sure mitigation measures included in the Municipal Appendix addressed the risks faced by residents, businesses, and property owners and reflected the priorities of the community. The Working Group will also continue to stay involved during the implementation and maintenance of the NJ4 HMP.

**Table GC.14-1: Newfield Borough (Gloucester County) Working Group**

First Name	Last Name	Department	Position	Round 1 Work Session <sup>1</sup>	Round 2 Work Session <sup>2</sup>	Contribution <sup>3</sup>
Christopher	Davis	Newfield Borough	OEM Coordinator	<input checked="" type="checkbox"/>	<input checked="" type="checkbox"/>	Organized Working Group and Work Sessions.
Donald	Sullivan	Newfield Borough Council / Newfield Borough Public Safety	Council Member / Public Safety Chair Person		<input checked="" type="checkbox"/>	
Samuel E.	Barbagli	Newfield Borough Public Works Department	Public Works Supervisor		<input checked="" type="checkbox"/>	
David	Gallo	Newfield Borough Police Department	Patrolman	<input checked="" type="checkbox"/>		Provided municipal documents for review.
Jeffrey	Schaw	Newfield Borough Police Department	Patrolman		<input checked="" type="checkbox"/>	

<sup>1</sup> Round 1 Work Session was held on July 30, 2014.

<sup>2</sup> Round 2 Work Session was held on October 29, 2014.

<sup>3</sup> Municipal Working Group members reviewed briefing materials in advance of Work Sessions, contributed during Work Sessions, and reviewed the preliminary Mitigation Plan for Four New Jersey Counties. Additional or unusual contributions are noted in the far right hand column of Table GC.14-1.

## Part 2: Participation

---

The following lists candidate positions and organizations within the community that were extended invitations but could not participate during the development of the Municipal Appendix. These positions and organizations will continue to be extended invitations to participate during subsequent plan implementation and maintenance activities<sup>4</sup>.

- Building Code Official
- Engineering
- Fire
- Emergency Medical Services
- Community / Faith-Based Organizations
- School Board

The following lists positions and organizations that are generally recommended for consideration as members of the Municipal Working Groups by FEMA but do not currently exist within the community. An invitation to participate will be extended if positions are created or filled and as organizations are formed.

- Floodplain Administrator (Newfield Borough is not a participating community under the National Flood Insurance Program)
- Land Use / Economic Development Planner
- GIS / IT Specialist
- Transportation Department Directors / Supervisors
- Business Associations
- Environmental Organizations
- Non-Governmental Organizations
- Critical Infrastructure and Key Resources
- Major Employers and Businesses
- Healthcare Institutions

---

<sup>4</sup> See *Section 4: Mitigation Measures* of the NJ4 HMP Regional Hazard Mitigation Plan.

## Part 2: Participation

---

### Part 2.2: Public Participation

Part 2.2 includes opportunities provided to the public and interested parties in the municipality to participate during the plan update process.

Table GC.14-2 identifies the date, type, and location (where applicable) for opportunities provided to the public and interested parties to participate in the development of the plan update.

**Table GC.14-2: Public Participation**

Date	Type of Involvement	Location
October 25, 2014	Link to Project Website ( <a href="http://nj4hmp.com">http://nj4hmp.com</a> ) established	Borough of Newfield <sup>5</sup>
October 27, 2014	Flyers posted	Newfield Borough Police Department
December 3, 2014	Preliminary Municipal Appendix posted to website for public comment	Borough of Newfield <sup>5</sup>
[date to be determined in 2015]	Public meeting for plan adoption	[location to be determined]

Public comments and input received for the Preliminary Municipal Appendix were considered by the Municipal Working Group and incorporated into the Draft Municipal Appendix where appropriate. Public comments received during the review of the Preliminary Municipal Appendix were included in Attachment A to the Municipal Appendix along with a brief explanation of how the comments were addressed in the Draft Municipal Appendix.

Public education and outreach is an on-going mitigation measure included in the Municipal Appendix<sup>6</sup>. In addition, public participation will continue to be encouraged during subsequent plan implementation and maintenance activities<sup>7</sup>.

---

<sup>5</sup> <http://www.newfieldboro.net/>

<sup>6</sup> See Mitigation Measure M-1 in Part 4 of the Municipal Appendix.

<sup>7</sup> See *Section 4: Mitigation Measures* of the NJ4 HMP Regional Hazard Mitigation Plan.



## Part 3: Hazard Identification and Risk Assessment

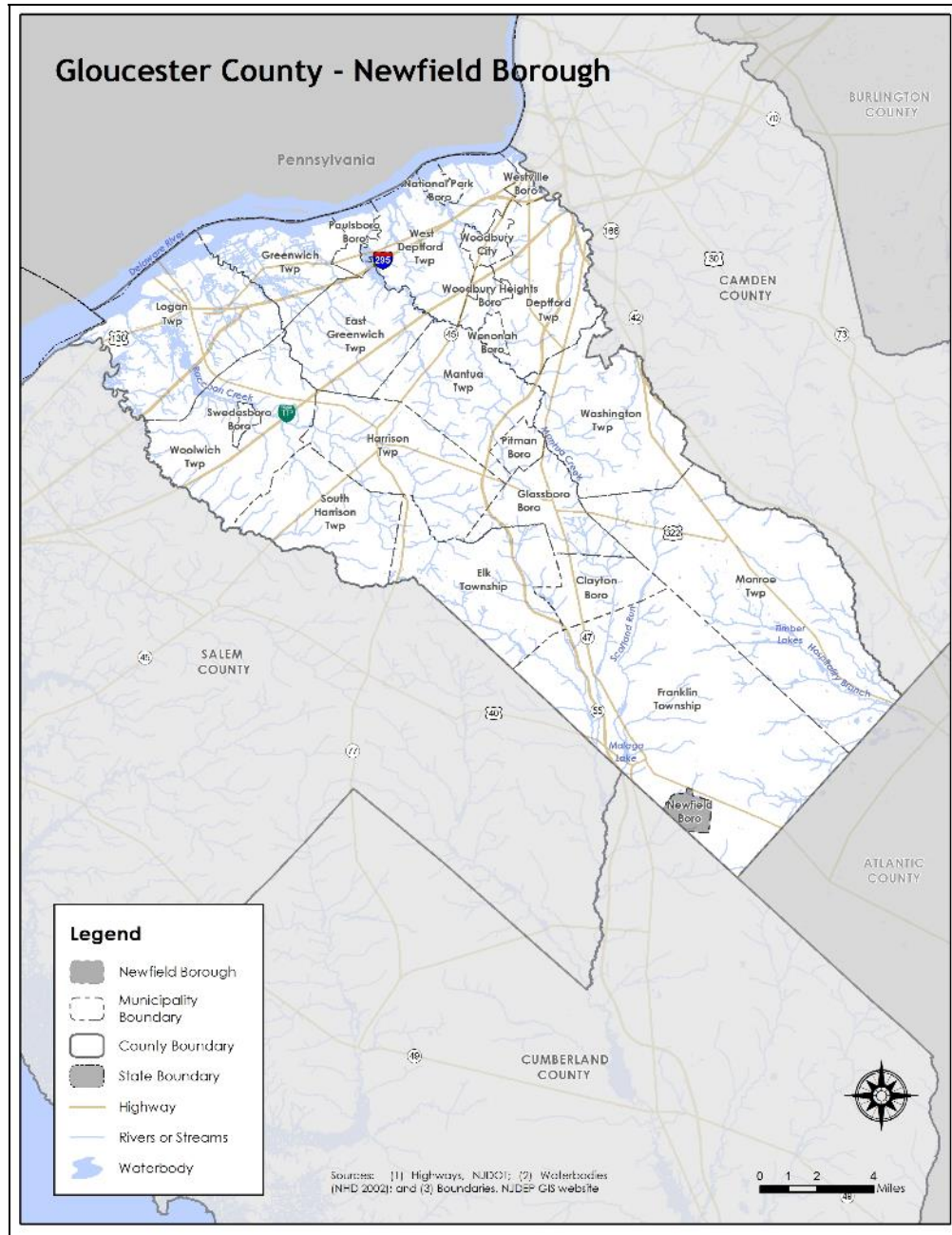
### Part 3.1: Municipal Profile

Part 3.1 includes:

- Selected data and information about the municipality that is generally relevant for emergency management planning and specifically for hazard mitigation
- A brief character sketch for the municipality that is only intended to portray a few of the most basic elements

Newfield Borough is located in the southwestern part of Gloucester County (See Figure GC.14-1).

Figure GC.14-1: Newfield Borough (Gloucester County) Location Map

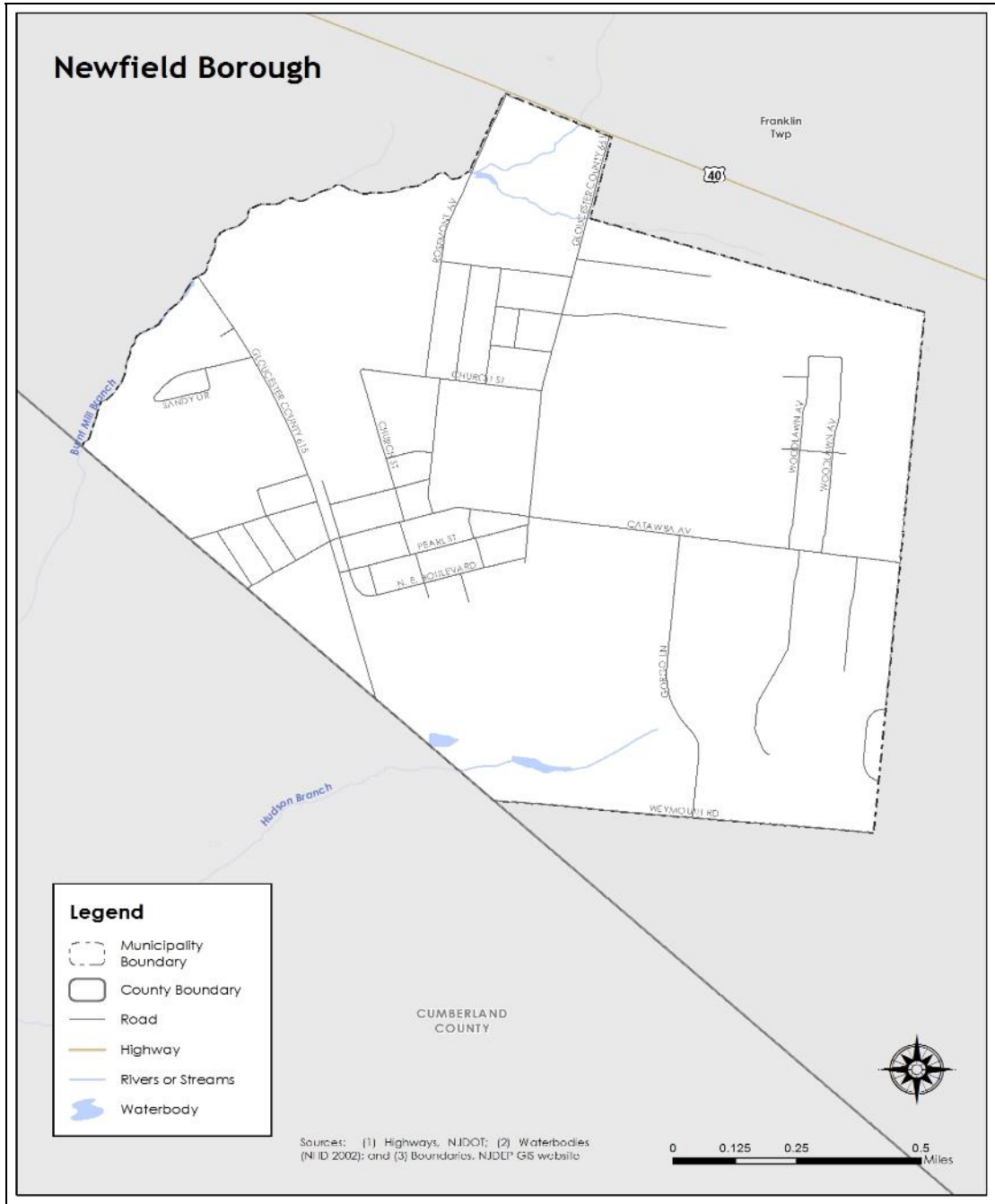


### Part 3: Hazard Identification and Risk Assessment

Newfield Borough is a rural residential community with minimal commercial areas.

Per Figure GC.14-2, the major water courses include Burnt Mill Branch and Hudson Branch. A major transportation route includes Gloucester County Highway 615. The land is gently rolling.

Figure GC.14-2: Newfield Borough Base Map



### Part 3: Hazard Identification and Risk Assessment

In addition, Table GC.14-3 is a compilation of demographic information for the municipality and comparison with the county, the four county region, and State of New Jersey.

**Table GC.14-3: Newfield Borough Demographics**  
(Source: Census DP-1, 2010 ACS 5 Year Estimates, DP 3, 4)

	Newfield Borough	Gloucester County	Region	New Jersey
2000 Population	1,616	254,673	974,328	8,414,350
2010 Population	1,553	288,288	1,024,926	8,791,894
Percent Change	-3.90%	13.2%	5.19%	4.49%
Population Density	912.0 / sq. mile	895.3 / sq. mile	754.25 / sq. mile	1,195.5 / sq. mile
Land Area	1.70 sq. miles	322.00 sq. miles	1,358.86 sq. miles	7,354.22 sq. miles
% of Population 18 and younger	23.4	24.4	24.1	23.5
% of Population 18 - 64	62.5	63.2	62.7	63
% of Population 65 and over	14.1	12.4	13.2	13.5

Table GC.14-4 illustrates how Newfield Borough ranks in the county, the four county region, and New Jersey.

**Table GC.14-4: Newfield Borough Demographic Rankings**

	Gloucester County (total of 24)	Region (total of 90)	New Jersey (total of 566)
Population Rank	24	81	511
Land Area Rank	20	64	430
Population Density Rank	15	53	397
Population Change Rank	22	76	-

Table GC.14-5 includes information related to economic and housing statistics for Newfield Borough, Gloucester County, the four county region, and New Jersey.

**Table GC.14-5: Newfield Borough Economics and Housing**  
(Source: USDA ERS, Census DP-1, 2010 ACS 5 Year Estimates, DP 3, 4; NJ LWD 2010)

	Newfield Borough	Gloucester County	Region	New Jersey
Date Incorporated	March 8, 1924	1686	-	-
Rural / Urban Status	Urban	Urban	Urban	Urban
Median Household Income	\$60,350	\$72,664	\$60,933	\$69,811
Total Number of Housing Units	626	109,796	397,990	3,529,033
Occupied Housing Units	579	104,271	372,472	3,176,069
Vacant Housing Units	47	5,525	25,518	352,964
Owner Occupied Housing Units	475	83,525	266,593	2,126,279
Renter occupied Housing Units	104	20,746	105,879	1,049,790

**Part 3: Hazard Identification and Risk Assessment**

	Newfield Borough	Gloucester County	Region	New Jersey
Building Permits	0	716	1,554	13,535
Largest Industry	Educational Services, and health care and social assistance	Educational Services, and health care and social assistance	Educational services, and health care and social assistance	Educational services, and health care and social assistance

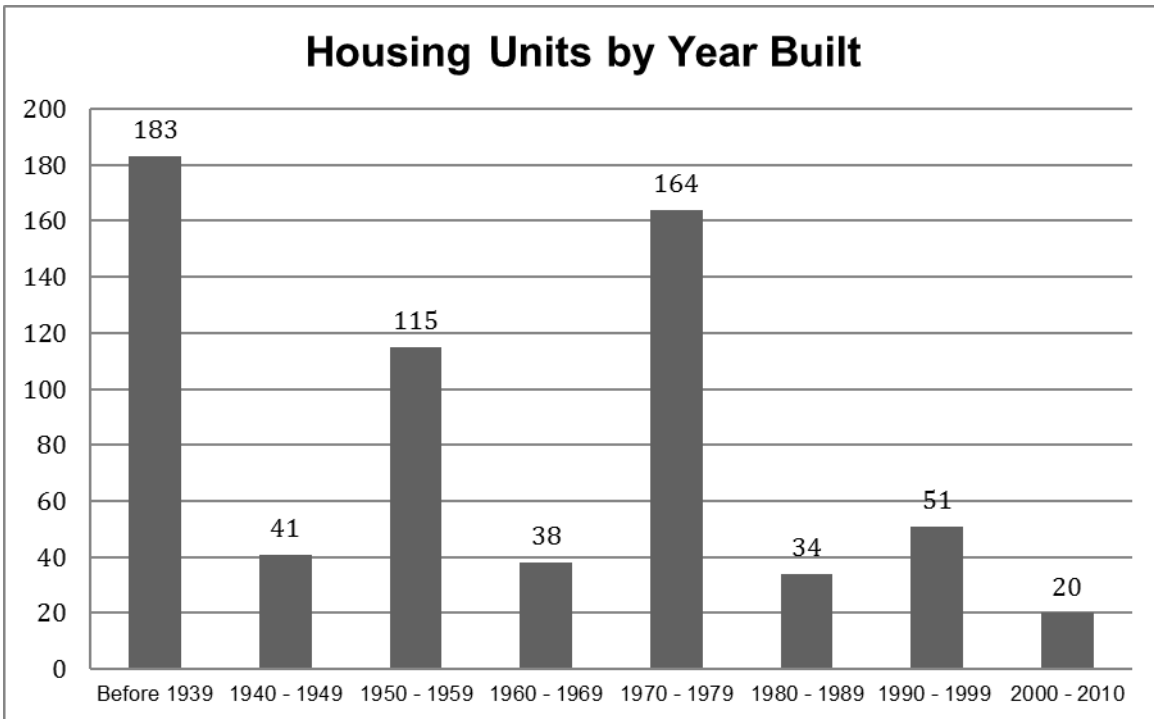
Table GC.14-6 illustrates how Newfield Borough ranks in the county and the four county region.

**Table GC.14-6: Newfield Borough Ranking (Economics and Housing)**

	Gloucester County (total of 24)	Region (total of 90)
Median Household Income Rank	20	55
Vacant Housing Rank	21	75
Renter Occupied Housing Rank	21	77
Building Permits Rank	22	85

Figure GC.14-3 illustrates development patterns in Newfield Borough by examining housing units by year built. About 29% of homes in Newfield Borough were built prior to 1939.

**Figure GC.14-3: Newfield Borough Housing Units by Year Built**  
(Source: 2010 ACS 5 Year Estimates, DP 4)



---

## Part 3: Hazard Identification and Risk Assessment

---

### Part 3.2: Hazard Priorities

*Part 3.2 includes hazard priority determinations per the Municipal Working Group.*

As a key step in the Hazard Identification and Risk Assessment (HIRA) process, the twelve (12) natural hazards identified in the NJ4 HMP<sup>1</sup> were discussed during the Municipal Working Group Work Sessions and the relative priority of these hazards was identified. The Municipal Working Group rated the hazards as follows:

#### High Priority

- None

#### Moderate Priority

- Flood
- High Wind
- Severe Weather – Winter

#### Low Priority

- Drought
- Earthquake
- Extreme Temperature: Hot & Cold
- Severe Weather – Summer
- Wildfire

Four additional hazards were discussed but were not considered applicable to the municipality:

- Coastal Erosion & Sea Level Rise
- Dam Failure
- Geologic Hazards
- Levee Failure

---

<sup>1</sup> See Section 3: Hazard Identification and Risk Assessment.

## Part 3: Hazard Identification and Risk Assessment

### Part 3.3: Hazard Mapping

Part 3.3 includes cross references to hazard inventory and risk assessment mapping included in the NJ4 HMP Regional Hazard Mitigation Plan.

Table GC.14-7 provides information regarding hazard inventory mapping included in *Section 3: Hazard Identification and Risk Assessment* of the NJ4 HMP Regional Hazard Mitigation Plan that support the Hazard Identification and Risk Assessment (HIRA) for the Municipal Appendix. The indicated maps and exhibits correspond to the hazards identified by the Municipal Working Group in Part 3.2. The information represented by these maps was used in the Critical Facilities Hazard Exposure Assessment described in Part 3.4.

**Table GC.14-7: Supporting Mapping and Exhibits**

Figure # <sup>2</sup>	Hazard	Map	HIRA Contribution
Figure RP.3-X	Flood	FEMA Flood Hazard Zones Preliminary FIRM (PFIRM)	Identify areas subject to periodic flooding (work-in-progress for revisions to effective FIRM)
Figure RP.3-X	Wildfire	Wildland Fuel Hazard Risk	Identify areas subject to wildfire
Figure RP.3-X	Wildfire	Wildland Urban Interface (WUI)	Identify areas subject to wildfire

The following hazards are not referenced as these hazards occur uniformly across the municipality and have the same potential impact on all properties and assets:

- Drought
- Earthquake
- Extreme Temperatures – Cold and Hot
- High Wind
- Severe Weather – Summer
- Severe Weather – Winter

<sup>2</sup> **Note to Draft Municipal Appendix Reviewers:** Map and exhibit cross references to Section 3: Hazard Identification and Risk Assessment of the Regional Hazard Mitigation Plan will be inserted when the Draft Regional Hazard Mitigation Plan is completed.

---

## Part 3: Hazard Identification and Risk Assessment

---

### Part 3.4: Critical Facilities Inventory and Hazard Exposure Assessment

*Part 3.4 includes:*

- *Inventory information for municipal critical facilities*
- *Hazard exposure analysis results for municipal critical facilities*

Consistent with the process described in Section 3 of the NJ4 HMP Regional Hazard Mitigation Plan, Table GC.14-8 contains updated inventory information for municipal critical facilities including cross-references to related mitigation measures identified in Part 4 of the Municipal Appendix.

Table GC.14-9 contains results of overlaying critical facility locations with hazard mapping identified in Part 3.3. The results indicate critical facilities that are potentially exposed to specific hazards. This information is displayed in Section 3 of the NJ4 HMP Regional Hazard Mitigation Plan and will be used in critical site and facility assessments to be conducted as part of Mitigation Measure M-2 (see Part 4 of the Municipal Appendix).

Hazards that apply to all critical facilities in the NJ4 region and will automatically be included in the proposed critical site and facility assessment process include:

- Earthquake
- High Wind
- Severe Weather – Summer
- Severe Weather – Winter

Hazards that do not relate to the proposed critical site and facility assessment process include:

- Drought
- Extreme Temperatures – Cold and Hot

As a result, these six (6) hazards are not included in the critical facility exposure assessment in Section 3 of the NJ4 HMP Regional Hazard Mitigation Plan.

**Part 3: Hazard Identification and Risk Assessment**

**Table GC.14-8: Newfield Borough (Gloucester County) Critical Facilities Inventory**

CF #	Name	Type	Sub-Type	Address	Co-located CF #	Shelter (Y/N)	Generator (Y/N)	Comments	Mitigation Measure #
CF-1	Borough Hall	Municipal	Administrative Offices	18 Catawba Avenue, Newfield		Y <sup>3</sup>	Y		
CF-2	Emergency Operations Center	EOC	Co-located Facilities	18 Catawba Avenue, Newfield	CF-1	N	Y		
CF-3	Police Station	Law Enforcement Facilities	Stations	18 Catawba Avenue, Newfield	CF-1	N	Y		
CF-4	Newfield Borough Fire Department	Fire Station	Stations	18 Catawba Avenue, Newfield	CF-1	N	Y		
CF-5	EMS	EMS	Municipal Stations	113 Catawba Avenue, Newfield		N	Y		
CF-6	Public Works	Public Works	Combined Administrative Office, Maintenance / Work Area, Equipment / Material Storage, and Fueling Station	15 Gorgo Lane, Newfield		N	N		M-5 / M-10
CF-7	Well #3	Utilities – Water	Wellhead	Catawba Avenue, Newfield		N/A	Y		
CF-8	Well #5	Utilities – Water	Wellhead	Catawba Avenue & Woodlawn Avenue, Newfield		N/A	Y		
CF-9	Water Tower	Utilities – Water	Water Towers	15 Gorgo Lane, Newfield	CF-6	N/A	N		M-6
CF-10	Edgerton Christian Academy	Schools	Charter Schools	212 Catawba Avenue, Newfield		Y <sup>3</sup>	N		M-7
CF-11	Community Center	Other Municipal	Community Center						

<sup>3</sup> Shelter of last resort.



**Part 3: Hazard Identification and Risk Assessment**

**Table GC.14-9: Newfield Borough (Gloucester County) Critical Facilities Hazard Exposure<sup>4</sup>**

CF #	Name	Increased Inundation +1 Foot	Increased Inundation +2 Foot	Increased Inundation +3 Foot	Dam Failure	Flood – FIRM Zone V	Flood – FIRM Zone A	Flood – FIRM Zone 0.02%	Storm Surge – Category 1	Storm Surge – Category 2	Storm Surge – Category 3	Storm Surge – Category 4	Levee Failure	Wildfire Wildland High Density Urban Interface	Wildfire Extreme / High Fuel Level Risk
CF-1	Borough Hall	N/A	N/A	N/A	N/A	N/A			N/A	N/A	N/A	N/A	N/A		
CF-2	Emergency Operations Center	N/A	N/A	N/A	N/A	N/A			N/A	N/A	N/A	N/A	N/A		
CF-3	Police Station	N/A	N/A	N/A	N/A	N/A			N/A	N/A	N/A	N/A	N/A		
CF-4	Fire Company	N/A	N/A	N/A	N/A	N/A			N/A	N/A	N/A	N/A	N/A		
CF-5	EMS	N/A	N/A	N/A	N/A	N/A			N/A	N/A	N/A	N/A	N/A		
CF-6	Public Works	N/A	N/A	N/A	N/A	N/A			N/A	N/A	N/A	N/A	N/A		
CF-7	Well #3	N/A	N/A	N/A	N/A	N/A			N/A	N/A	N/A	N/A	N/A		
CF-8	Well #5	N/A	N/A	N/A	N/A	N/A			N/A	N/A	N/A	N/A	N/A		
CF-9	Water Tower	N/A	N/A	N/A	N/A	N/A			N/A	N/A	N/A	N/A	N/A		
CF-10	Edgarton Christian Academy	N/A	N/A	N/A	N/A	N/A			N/A	N/A	N/A	N/A	N/A		
CF-11	Community Center	N/A	N/A	N/A	N/A	N/A			N/A	N/A	N/A	N/A	N/A		

<sup>4</sup> **Note to Draft Municipal Appendix Reviewers:** Results for the Critical Facility Hazard Exposure Analysis for all hazards will be included in the Final Municipal Appendix. These results will not alter the existing mitigation measures in Part 4 of this Municipal Appendix but will be the basis for the site and facility assessments to be undertaken by the municipality under Mitigation Measure M-2.

---

## Part 4: Mitigation Measures

---

### Part 4.1: Mitigation Goals and Strategy

Part 4.1 includes:

- *Goal statements reviewed and approved by the Municipal Working Group based on goals included in the Southern Delaware Valley Region (New Jersey) Multi-Jurisdictional Hazard Mitigation Plans (SDVR HMPs) approved by FEMA in 2010 and 2011 for Camden, Cumberland, Gloucester, and Salem Counties*
- *Overarching strategy for the municipality's mitigation program*

Goals were originally established by the Southern Delaware Valley Region Hazard Mitigation Steering Committee and validated by the four County Hazard Mitigation Working Groups in response to risk and capability assessment results.

As part of the plan update process, these goals were reviewed and edited by the Municipal Working Group for use in the Municipal Appendix. All mitigation measures in the Municipal Appendix are related to at least one of these four goal statements.

- **Goal 1: Improve education and outreach efforts** regarding potential risk of natural hazards and appropriate mitigation measures that can be used to reduce risk (including programs, activities, and projects)
- **Goal 2: Improve data collection, use, and sharing** to reduce the risk of natural hazards
- **Goal 3: Improve capabilities and coordination** at municipal, county, and state levels to plan and implement hazard mitigation measures
- **Goal 4: Plan and implement projects** to mitigate identified natural hazards, known problems, and areas of concern

Based on these goals, the results of the NJ4 HMP Regional Hazard Mitigation Plan HIRA, and experience of participants in the plan update process, the Municipal Working Group identified an overarching strategy for mitigation:

- Focus on projects to address known problems or areas of concern for critical facilities and vulnerable populations as additional initial risk reduction efforts
- Provide opportunities for residents and property owners to access available information about risk reduction and mitigation measures
- Identify additional areas of concern for critical facilities and vulnerable populations for future plan updates
- Institutionalize hazard mitigation into municipal activities and programs through regular interactions of the Municipal Working Group and better integration of related regulatory programs and planning initiatives
- Stay informed regarding changing conditions and related improvements in hazard and risk data due to future natural hazard events and increasing understanding of the effects of climate change and use the information as part of periodic evaluations of and refinements or additions to the municipality's mitigation program

The mitigation measures described in Parts 4.3 through 4.5 of the Municipal Appendix reflect this strategy.

---

## Part 4: Mitigation Measures

---

### Part 4.2: SDVR HMP Mitigation Measures

Part 4.2 includes the status of mitigation measures identified for the municipality in the SDVR HMP.

Known problems and areas of concern were the basis for mitigation measures identified in the SDVR HMP. In cases where these problems and concerns still existed at the time of the plan update, the related SDVR HMP mitigation measures were candidates for inclusion in the Municipal Appendix.

Table GC.14-10 identifies the status of mitigation measures included in the SDVR HMP. These entries were based on information provided by the Municipal Working Group. In some cases, the SDVR HMP mitigation measures were carried over as part of the Municipal Appendix as indicated in the “Comments” column and the far right-hand column of Table GC.14-10.

**Table GC.14-10: Status of Newfield Borough (Gloucester County) SDVR HMP Mitigation Measures**

Mitigation Action, Program, or Project	Status	Comments	Mitigation Measure # (Notes A & B)
N/A	N/A	Newfield Borough did not participate in the SDVR Hazard Mitigation Plan. Therefore there are no mitigations measures that were previously identified for the municipality.	N/A

**Table GC.14-10 Notes:**

- A. See Tables GC.14-11 and GC.14-12 for municipal (M-#) mitigation measures
- B. See Table GC.14-13 for multi-jurisdictional (MJ-#) mitigation measures

## Part 4: Mitigation Measures

### Part 4.3: Municipal Mitigation Measures – Identification

Part 4.3 includes brief descriptions of mitigation measures that are considered the sole responsibility of the municipality.

Table GC.14-11 includes the list of mitigation measures that are considered the responsibility of the municipality. These mitigation measures:

- Reflect the goals and strategy identified in Part 4.1
- Include projects carried over from SDVR HMPs as detailed in Part 4.2
- Include new projects, programs or activities identified by the Municipal Working Groups including measures to address known problems or areas of concern for critical facilities and vulnerable populations
- Address Repetitive Flood Loss (RL) and Severe Repetitive Flood Loss Properties (SRL)<sup>1</sup> if applicable

*Note: Newfield Borough does not currently have RL or SRL properties per information provided by the New Jersey Department of Environmental Protection.*

Table GC.14-11 includes:

- Brief description of the mitigation action, program or project
- Hazard(s) addressed by the measure
- Relevant goal(s) addressed by the measure
- Whether the measure pertains to existing or new structures or both

*Note: Mitigation measures with discrete locations are shown in Figure GC.14-4.*

**Table GC.14-11: Newfield Borough (Gloucester County) Municipal Mitigation Measures Identification**

#	Mitigation Action, Program, or Project	Hazard(s)	Goal (s)	Existing or New Structures
M-1	Identify and pursue outreach and education opportunities to inform municipal residents, businesses, and property owners regarding: <ul style="list-style-type: none"> <li>• Current hazards and risks</li> <li>• Changing conditions and actions that may reduce / increase risk</li> <li>• Best practices for hazard mitigation at the individual or property level.<sup>2</sup></li> </ul>	All	Goal #1	Both
M-2	Prioritize critical facilities and complete site and facility surveys to identify vulnerabilities and potential mitigation measures.	All	Goal #2	Existing
M-3	Prioritize recurrent drainage problem areas and initiate data collection to track unreimbursed damages and related response and recovery expenses.	All	Goal #2	Existing

<sup>1</sup> See Section 3: Hazard Identification and Risk Assessment and related portions of Annex D of the NJ4 HMP Regional Hazard Mitigation Plan for a description of RL and SRL properties.

<sup>2</sup> For example, individual property owners can be informed about back-up power alternatives such as initial battery back-up for power disruptions.

## Part 4: Mitigation Measures

#	Mitigation Action, Program, or Project	Hazard(s)	Goal (s)	Existing or New Structures
M-4	Conduct regular Municipal Working Group meetings consistent with the plan maintenance program and the Municipal Adoption Resolution.	All	Goal #3	Both
M-5	Install permanent backup power at Public Works building (CF-6).	All	Goal #4	Both
M-6	Install permanent backup power at Water Tower (CF-9).	All	Goal #4	Both
M-7	Install permanent backup power generator Edgerton Christian Academy (CF-10).	All	Goal #4	Both
M-8	Engineering study to determine benefit of solar panel usage throughout Newfield Borough.	All	Goal #4	Existing
M-9	Develop tree removal / maintenance plan to reduce risk of power disruption and damage to critical facilities.	All	Goal #4	Both
M-10	Harden / construct protective infrastructure for outdoor garage at Public Works facility to protect municipal equipment (CF-6).	High Wind	Goal #4	Both

## Part 4: Mitigation Measures

### Part 4.4: Municipal Mitigation Measures – Implementation

Part 4.4 includes a tabulation of relevant aspects related to the implementation of the municipal mitigation measures.

Table GC.14-12 includes information identified by the Municipal Working Group:

- Part(ies) responsible for following up with implementation of the measure
- Priority for implementation considering a range of criteria<sup>3</sup>
- Project Type to help determine funding options and implementation mechanisms at the municipal level<sup>4</sup>
- Estimated Cost, including estimates provided by the Municipal Working Group or approximate ranges for projects that are in early stages of development
- Target Date, indicating desired completion dates assuming availability of funding
- Next step(s) anticipated to implement the identified mitigation measures at the municipal level

**Table GC.14-12: Newfield Borough (Gloucester County) Municipal Mitigation Measures Implementation**

#	Mitigation Action, Program, or Project	Responsible Part(ies)	Priority	Project Type	Estimated Cost (\$)	Target Date	Next Step(s)
M-1	Identify and pursue outreach and education opportunities.	Municipal OEM	Moderate	Public Outreach and Education	Staff time commitment	On-going	<ul style="list-style-type: none"> <li>▪ Work with County Working Group to identify resource needs and availability.<sup>5</sup></li> <li>▪ Identify target audience(s).</li> </ul>
M-2	Prioritize critical facilities and complete site and facility surveys to identify vulnerabilities and potential mitigation measures.	Municipal OEM and Facility Managers	Moderate	Data Acquisition and Management	Staff time commitment	On-going	Review critical facility list and establish priorities, procedures, and tentative time schedule for conducting site and facility surveys. <sup>5</sup>
M-3	Prioritize recurrent drainage problem areas and initiate data collection to track unreimbursed damages and related response and recovery expenses.	Municipal OEM and Municipal Working Group	Moderate	Capabilities and Coordination	Staff time commitment	On-going	Identify recurrent drainage problem areas, establish priorities, and identify data collection procedures. <sup>5</sup>
M-4	Conduct regular Municipal Working Group meetings.	Municipal OEM and Municipal Working Group	Moderate	Capabilities and Coordination	Staff time commitment	On-going	Establish regular Municipal Working Group membership, reporting requirements, and meeting / work session schedule. <sup>5</sup>

<sup>3</sup> See *Section 4: Mitigation Measures* and related portions of Annex E of the NJ4 HMP Regional Hazard Mitigation Plan for a description of evaluation criteria considered by the Municipal Working Group.

<sup>4</sup> See *Section 4: Mitigation Measures* and related portions of Annex F of the NJ4 HMP Regional Hazard Mitigation Plan for a description of project types and related information regarding funding options and implementation mechanisms.

<sup>5</sup> **Note to Draft Municipal Appendix Reviewers:** Workshops conducted as part of the NJ4 HMP planning process will include information relevant to these project types.

## Part 4: Mitigation Measures

#	Mitigation Action, Program, or Project	Responsible Part(ies)	Priority	Project Type	Estimated Cost (\$)	Target Date	Next Step(s)
M-5	Install permanent backup power at Public Works building (CF-6).	Municipal OEM and Public Works Department	Moderate	Back-up Emergency Power Generator	< \$100K	One to three years	Conduct project scoping. <sup>5</sup>
M-6	Install permanent backup power at Water Tower (CF-9).	Municipal OEM and Public Works Department	High	Back-up Emergency Power Generator	< \$100K	One to three years	Conduct project scoping. <sup>5</sup>
M-7	Install permanent backup power generator Edgerton Christian Academy (CF-10).	Municipal OEM and Public Works Department		Back-up Emergency Power Generator	< \$100K	One to three years	Conduct project scoping. <sup>5</sup>
M-8	Engineering study to determine benefit of solar panel usage throughout Newfield Borough.	Municipal OEM and Public Works Department		Public Property Mitigation	< \$50K	One to three years	Develop scope of work for engineering study and procure professional consulting services.
M-9	Develop tree removal / maintenance plan to reduce risk of power disruption and damage to critical facilities.	Municipal OEM and Public Works Department		Private Property Mitigation	< \$50K	One to three years	Conduct project scoping. <sup>5</sup>
M-10	Harden / construct protective infrastructure for outdoor garage at Public Works facility to protect municipal equipment (CF-6).	Municipal OEM and Public Works Department	Moderate	Building Retrofit	< \$100K	One to three years	Conduct project scoping. <sup>5</sup>

## Part 4: Mitigation Measures

### Part 4.5: Multi-Jurisdictional Mitigation Measures

*Part 4.5 includes brief descriptions of mitigation measures that require multiple jurisdictions to implement.*

During the Municipal Working Group Work Sessions, the Municipal Working Group identified some SDVR HMP mitigation measures as well as new areas of concern as mitigation measures where implementation requires participation or leadership from other levels of government, including county, state, and federal agencies. These multi-jurisdictional mitigation measures are included in Table GC.14-13.

*Section 4: Mitigation Measures* of the NJ4 HMP Regional Hazard Mitigation Plan describes multi-jurisdictional implementation strategies in detail. Section 4 identifies multi-jurisdictional mitigation measures that Municipal Working Groups believe are partly or wholly the responsibility of County agencies. These measures have been referred to the County Working Group for consideration. As part of the mitigation measures in the County Appendix to the NJ4 HMP Regional Hazard Mitigation Plan, the County Working Group will be working with the municipalities to identify:

- Specific responsibilities amongst different level(s) of government to address these problem areas
- Mitigation measures or related projects which may address the described problem areas that are already acknowledged as County responsibilities including identifying the appropriate County agency or department taking the lead role and status of implementing these mitigation measures
- Which, if any, additional mitigation measures the member agencies of the County Working Group will assume responsibility to implement

*Note: Multi-jurisdictional mitigation measures with discrete locations are shown in Figure GC.14-4.*

**Table GC.14-13: Newfield Borough (Gloucester County) Multi-Jurisdictional Mitigation Measures**

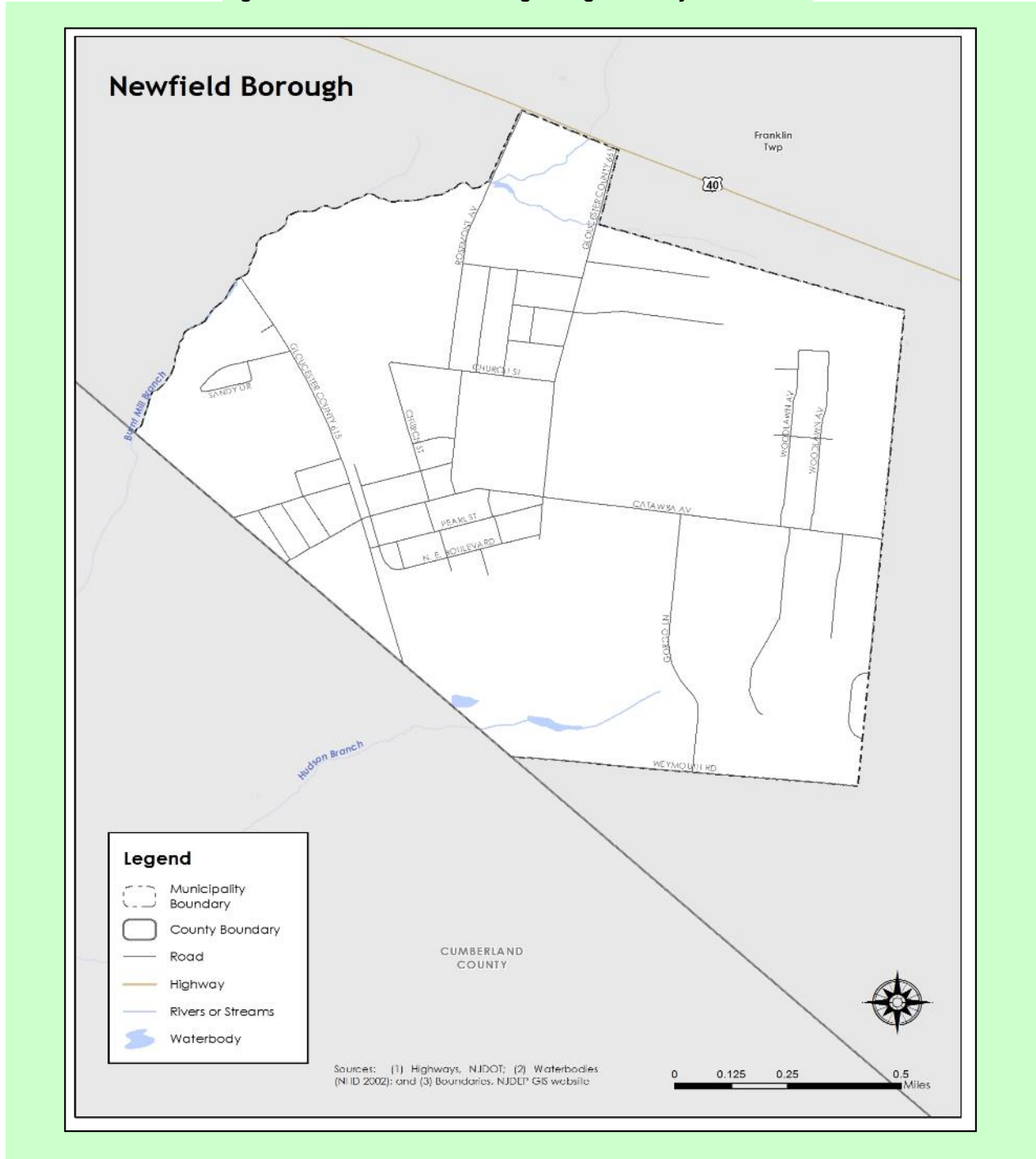
#	Problem Description	Hazard(s) Addressed	Goal Addressed	Applies to Existing or New Structures	Responsible Party	Priority
MJ-1	Alleviate flooding at Catawba Avenue and Hazel Avenue.	Flood	Goal #4	Both	Municipal OEM, Gloucester County DPW	To be determined <sup>6</sup>
MJ-2	Alleviate flooding at Sandy Drive to address drainage issues between New Jersey Route 42 and Fawn Drive.	Flood	Goal #4	Existing	Municipal OEM, Gloucester County DPW	To be determined <sup>6</sup>
MJ-3	Alleviate flooding at Rosemont Avenue and West Boulevard.	Flood	Goal #4	Existing	Municipal OEM, Gloucester County DPW, NJDOT	To be determined <sup>6</sup>

<sup>6</sup> **Note to Municipal Working Group:** Pending discussion with Gloucester County Working Group.



Part 4: Mitigation Measures

Figure GC.14-4: Newfield Borough Mitigation Project Locations<sup>7</sup>



<sup>7</sup> **Note to Draft Municipal Appendix Reviewers:** Map shown in Draft Municipal Appendix is only a placeholder and will be replaced with map showing Municipal and Multi-jurisdictional Mitigation Measures in the Final Municipal Appendix.

---

## Part 4: Mitigation Measures

---

### Part 4.6: Capabilities and Coordination

Part 4.6 includes:

- *Cross references to relevant information and recommendations in the NJ4 HMP Regional Hazard Mitigation Plan regarding improving capabilities and coordination at the municipal level*
- *Plans and programs included in the development of Plan Integration recommendations in the NJ4 HMP Regional Hazard Mitigation Plan*

The update of the SDVR HMP included reexamining municipal hazard mitigation capabilities; potential for improving capabilities and coordination within and between jurisdictions; and, plan integration considerations. *Section 4: Mitigation Measures* and related portions of Annex F of the NJ4 HMP Regional Hazard Mitigation Plan include summary observations and recommendations<sup>8</sup> concerning:

- Hazard mitigation planning and mitigation measure implementation capabilities at the regional, county, and municipal levels
- Coordination within municipal governments, between municipal governments and their communities, and between municipal, county, and state agencies responsible for hazard mitigation
- Integration of hazard mitigation data, goals, measures, and/or recommendations with existing plans and programs at the municipal level

Specific documents obtained during the plan update process from the Municipal Working Group that were incorporated into these observations and recommendations regarding plan integration include:

- **Emergency Operations Plan – Base Plan ([date])**
- Master Plan (2004)
- **Stormwater Management Plan ([date])**
- Zoning Ordinance <sup>9</sup>

---

<sup>8</sup> **Note to Draft Municipal Appendix Reviewers:** Workshops conducted as part of the NJ4 HMP planning process will include sessions on improving capabilities and coordination at the municipal level.

<sup>9</sup> <http://ecode360.com/13251335#13251335>

---

**Attachment A: Public Review Comments**

---

The following comments were received during the public review of the Newfield Borough Municipal Appendix:

**Table GC.14.A-1: Public Review Comments**

Comment Date and Time	Comment	Response

*Note: As of January 5, 2015, no public review comments were received for the Newfield Borough Municipal Appendix.*